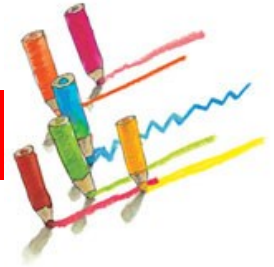




EI-Saline Elementary



Color Our World

Cardinal Challenge....

The Color Our World theme for this year is focused on coloring the world with respect, self-control, responsibility, positive attitudes & integrity.

October is Bullying Prevention Month. There will be a variety of activities at ESE to promote bullying prevention and kindness.

The Family Challenge: Focus on sharing kindness with others.

- Intentionally complete 2 acts of kindness for individuals outside your family.
- Intentionally complete 2 acts of kindness for individuals within the family.
- Notice and discuss acts of kindness you observe throughout the day.

October 2019

October 1

Hearing Checks

October 3

Picture Day—Individuals for ALL

October 4

Building Team Day

2nd Grade Field Trip to Rolling Hills

NO AFTER SCHOOL or PALS

October 7

Choose Kind T-Shirt Day

October 9

6:00 am—8:00 pm CPTA Meal Day at Panera Bread

October 11

NO AFTER SCHOOL or PALS

October 12

5:30-7:30 pm CPTA Family Fun Night

October 14

Hearing Rechecks

7:00 pm BOE Meeting

October 17

End of First Quarter

NO AFTER SCHOOL or PALS

October 18

NO SCHOOL—Teacher Work Day

October 21

6:00 pm CPTA Meeting

October 22

Choose Kind T-Shirt Day

NO AFTER SCHOOL or PALS

October 23

NO SCHOOL In-Service Day

4:15-8:15 Parent Teacher Conferences

October 24

NO SCHOOL

7:00-7:30 Parent Teacher Conferences

October 25

NO SCHOOL

October 29

Field Trip—K to Sunnyside Pumpkin Patch

October 30

Spirit Stick Sales Day

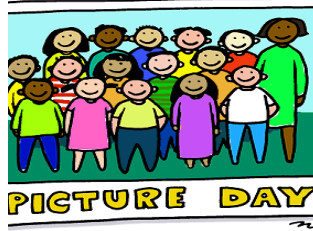
Fall Retakes & Group Class Photos

School Pictures

Fall Picture Day is Thursday, October 3.

Class Groups & Retakes are October 30.

NO Spring Photos scheduled this year.



HALLOWEEN PARADE AND PARTY



On **October 31**, the costume parade will start at 8:30. Parties begin about 9:00. All activities will be completed by 9:30 and classrooms will begin their regular instructional schedule.

Have students wear their costumes to school for the parade. Costumes will be removed and packed up following the parade. Students need to wear regular clothing under costumes or bring

additional clothing to school. When choosing costumes, please keep in mind they will be worn during the bus ride to school.

Please do not send weapons, make-up or hair dye.

Parents and family members are invited to watch the parade in the gym. The hallways get crowded with students during the parade. We ask all guests to remain in the gym until all students are back in their classrooms. Younger siblings are also welcome to watch the parade and observe classroom parties. However, participation in ("joining in") the parade and classroom parties is limited to ESE students.



October Spirit Sticks
Wednesday, October 30
\$1 each

Show and Tell for Student Pets



If a student wants to share a pet during show and tell, please contact the classroom teacher to make arrangements for a day, and time. You will provide the transportation to and from school for the pet. Animals are not allowed to travel on school buses.



October Breakfast & Lunch

Breakfast	Reduced: \$5.70	Full Price:	\$31.35
Lunch	Reduced: \$7.60	Full Price:	\$52.25

Redesign Update:

Ell-Saline Elementary is an Apollo School as a part of the KSDE Redesign Process. We will continue to provide information and seek feedback from our parents and community members. We will need your feedback as we look at our current practices and focus on the redesign principles for our future planning. The four principles are explained below.

Kansans Can School Redesign Principles

Student Success Skills	Family, Business, and Community Partnerships
There is an integrated approach to develop student social-emotional learning.	Partnerships are based on mutually beneficial relationships and collaboration.
Personalized Learning	Real World Application
Teachers support students to have choice over their time, place, pace and path.	Project-based learning, internships, and civic engagement makes learning relevant.

Fall Days Ahead

