

FROM THE SUPERINTENDENT'S DESK

As I sit here just prior to Spring Break I am hopeful that March will go out like a lamb rather than a lion. After these past months of winter weather and unusually large number of SNOW DAYS, I am ready for warm weather. The weather has played havoc with maintaining any regularity to our school schedule and preparing our students for the state assessments but the moisture that we've had has been very beneficial as we see the wheat fields starting to green up and other signs of spring around us.

Spring time in school is one of the most rewarding times of the school year as that is when the culmination of one year's, or several years', worth of effort and accomplishment is recognized. Our middle school recently competed in the league music festival where their hard work was rewarded by receiving a large number of "I" and "II" ratings. All of the music students performed very well in front of our parents and patrons at the MS/HS Concert where they played many of the contest numbers. The HS Girls' Basketball Team made school history by being our first girls' team to qualify for state. They finished the tournament with a 2nd Place finish!! The National Honor Society held their banquet on March 16 with the induction of 14 new members and the recognition of the 8 current senior members. As the seniors look forward to next year and pursuing their goals various scholarships have been announced, some of them very large, with more to come that will help in their endeavors. Although it is stressful for students and staff, now is also the time when our students take the Kansas State Assessment tests that give us information on progress they have made over the year and helps us make decisions for the future. Results of the formative tests that the students have taken in preparation for them indicate that our students should do very well again this year. The MS Scholar's Bowl teams are in the middle of their season and are consistently placing very high in the competitions they have been to. The HS Art and Industrial Arts students are finishing up their projects to display at various shows and competitions in the near future. There is yet a considerable amount to complete and showcase in the remaining weeks of school.

Thank you for your continued trust and confidence in the Ell-Saline USD 307 school district. You can be assured that your children are receiving a quality education. Please call or stop in so we can visit about the many good things going on in your district.

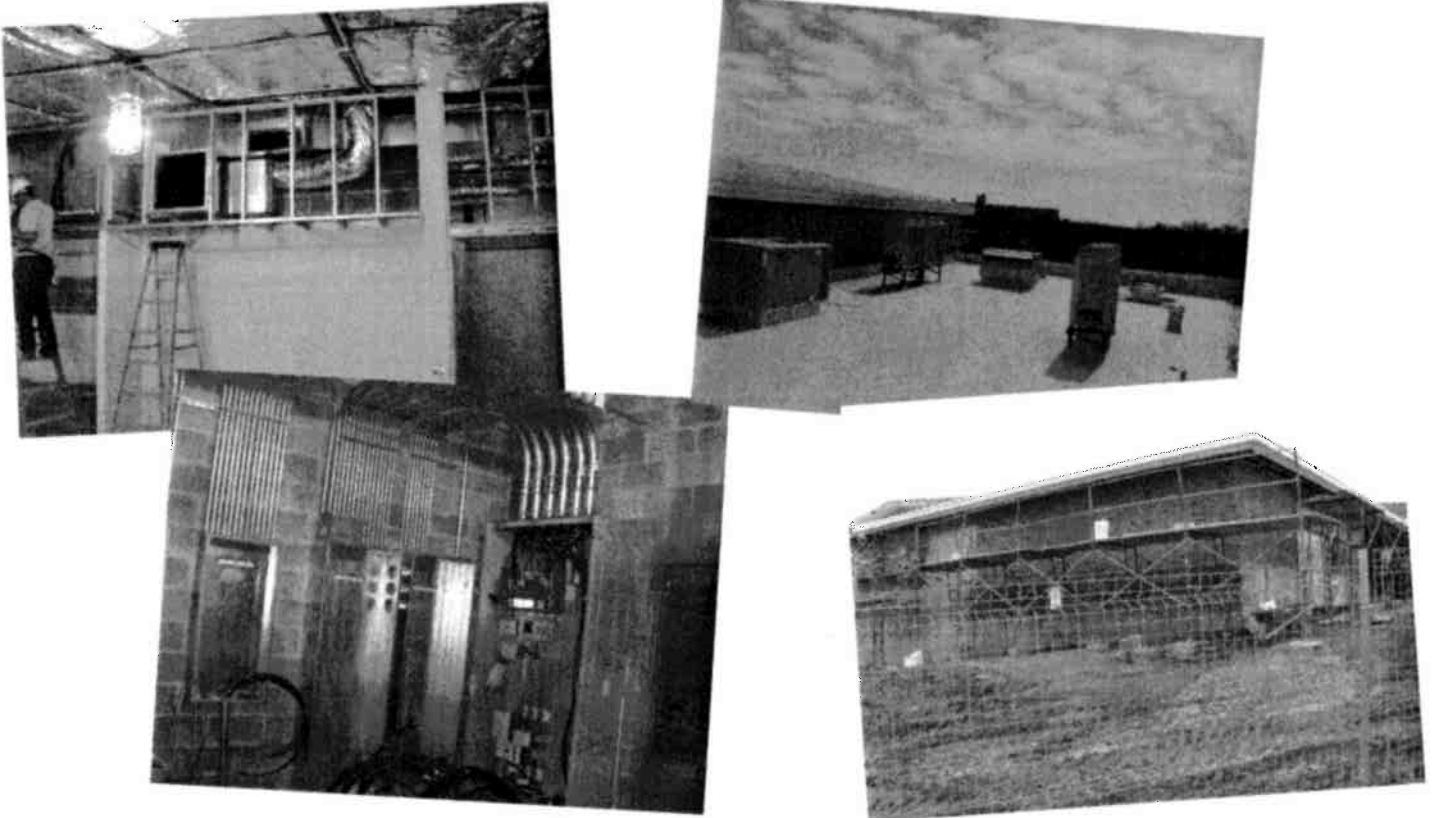
SENDOFF TO STATE

The elementary school showed its support for the HS Girls' Basketball Team as they headed to the state tournament for their first game on Thursday, March 10. The students made posters and then lined the playground and parking lot to cheer the team on as the bus drove past the elementary school.

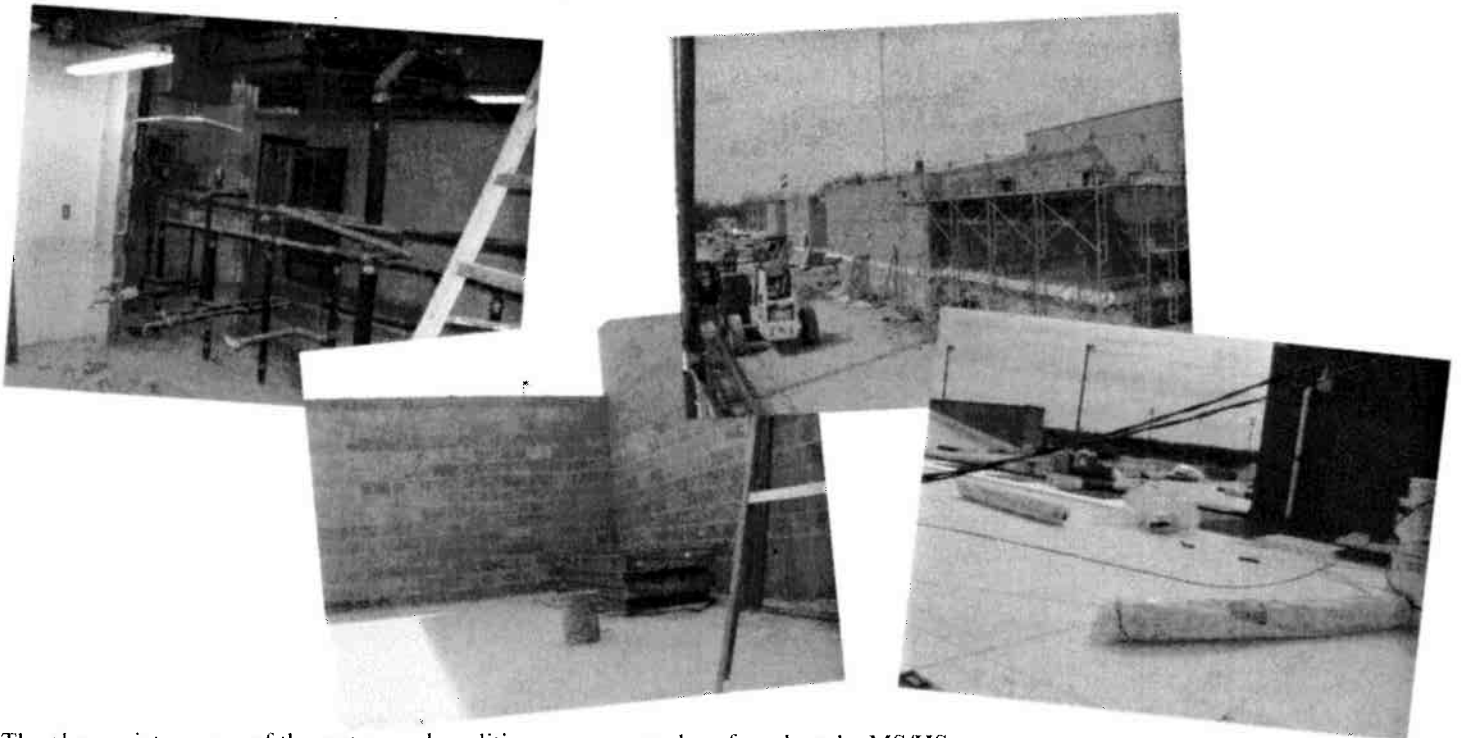


CONSTRUCTION PROGRESS PICTURES

The weather this past month has allowed for a considerable amount of work to be completed on our construction project. At the elementary school the brick veneer is being installed and the roof is practically completed. The majority of the work there is on the inside with HVAC, electrical, dry wall and painting taking place. At the middle/high school the work is consisting basically of masonry, roofing and demolition of the existing restrooms by the gymnasiums.






The above pictures are of the ductwork, electrical panel box, HVAC units on the roof and brick veneer at the elementary school.







The above pictures are of the restroom demolition, masonry and roof work at the MS/HS.



28	Monday	29	Tuesday	30	Wednesday	31	Thursday	1	Friday
GRILL CHICKEN WRAP LETTUCE & RANCH WHOLE GRAIN CORN BANANA HALF BREAD STICK MILK 		TONY'S PIZZA SPINACH SALAD PINEAPPLE CHUNKS VANILLA PUDDING MILK 		MEATLOAF POTATOES & BR. GRAVY SWEET PEAS BERRY SHORTCAKE HOT ROLL & JELLY MILK		HAMBURGER ON A BUN OVEN FRIES BABY CARROTS CHERRY CLOUD MILK 		BISCUITS & GRAVY SAUSAGE PATTY TRI TATER ORANGE SLICES MILK	

4	Monday	5	Tuesday	6	Wednesday	7	Thursday	8	Friday
BEEF RAVIOLI COTTAGE CHEESE SALAD W/SPINACH DICED PEACHES GARLIC BREAD MILK		BEEF & BEAN BURRITO LETTUCE & SALSA WHOLE GRAIN CORN APPLESAUCE BREADSTICK MILK		HOT HAM & CHEESE TRI TATER BAKED BEANS BANANA HALF STRAWBERRY MILK		Elem- Chicken Strips MS/MS-Teriyaki Chicken Seasoned Rice Broccoli Florets Crisp Apple Quarters Garlic bread Milk		ELL-SALINE PIZZA SPINACH SALAD PINEAPPLE CHUNKS CHOC. PUDDING MILK	

11	Monday	12	Tuesday	13	Wednesday	14	Thursday	15	Friday
CHICKEN ON A BUN SUN CHIPS BROCCOLI FLORETS ORANGE SLICES MILK 		PASTA & MEAT SAUCE TOSSED SALAD DICED PEACHES GARLIC BREAD CHOC. CHIP COOKIE MILK		CRISPITO & CHEESE LETTUCE & SALSA WHOLE GRAIN CORN PINEAPPLE CHUNKS BREAD STICK MILK <i>Ahh, the power of Cheese.™</i>		PIG IN A BLANKET TATOR TOTS BAKED BEANS CRISP APPLE QUARTER MILK		TUNA & NOODLES MASHED POTATOES SWEET PEAS ORANGE FLUFF ROLL & JELLY MILK 	

18	Monday	19	Tuesday	20	Wednesday	21	Thursday	22	Friday
CHICKEN NUGGETS OVEN FRIES BROCCOLI & CHEESE RED GRAPES BREAD STICK MILK 		TOSTADA LETTUCE & SALSA WHOLE GRAIN CORN APPLE SAUCE MILK 		MAC & CHEESE LITTLE SMOKIES GREEN BEANS CRISP APPLE QUARTER CINNAMON ROLL MILK		RIB PATTY SCALLOPED POTATOES SALAD W/SPINACH BERRIES & BANANA'S ROLL & JELLY MILK		NO SCHOOL EASTER BREAK 	

25	Monday	26	Tuesday	27	Wednesday	28	Thursday	29	Friday
NO SCHOOL EASTER BREAK 		CORN DOG TRI TATOR BAKED BEANS CRISP APPLE QUARTER MILK		CHICKEN FAJITA LETTUCE & SALSA SEASONED RICE ORANGE SLICES BROWNIE MILK 		COUNTRY STEAK POTATOES & GRAVY GREEN BEANS SLICED PEARS ROLL & JELLY MILK 		PANCAKES SLICED HAM WARM SPICY APPLES TRI TATER MILK 	

BREAKFAST LUNCH TOTALS									
Elementary- Breakfast \$26.60 Lunch \$42.75 MS/HS- Breakfast \$28.50 Lunch \$45.60 Reduced Breakfast \$5.70 Lunch \$7.60 Extra Milk .35									

STAFF MEMBER OF THE MONTH

March

RACHEL'S
Challenge
start a chain reaction

NCAA



KNEA
KANSAS NATIONAL
EDUCATION ASSOCIATION

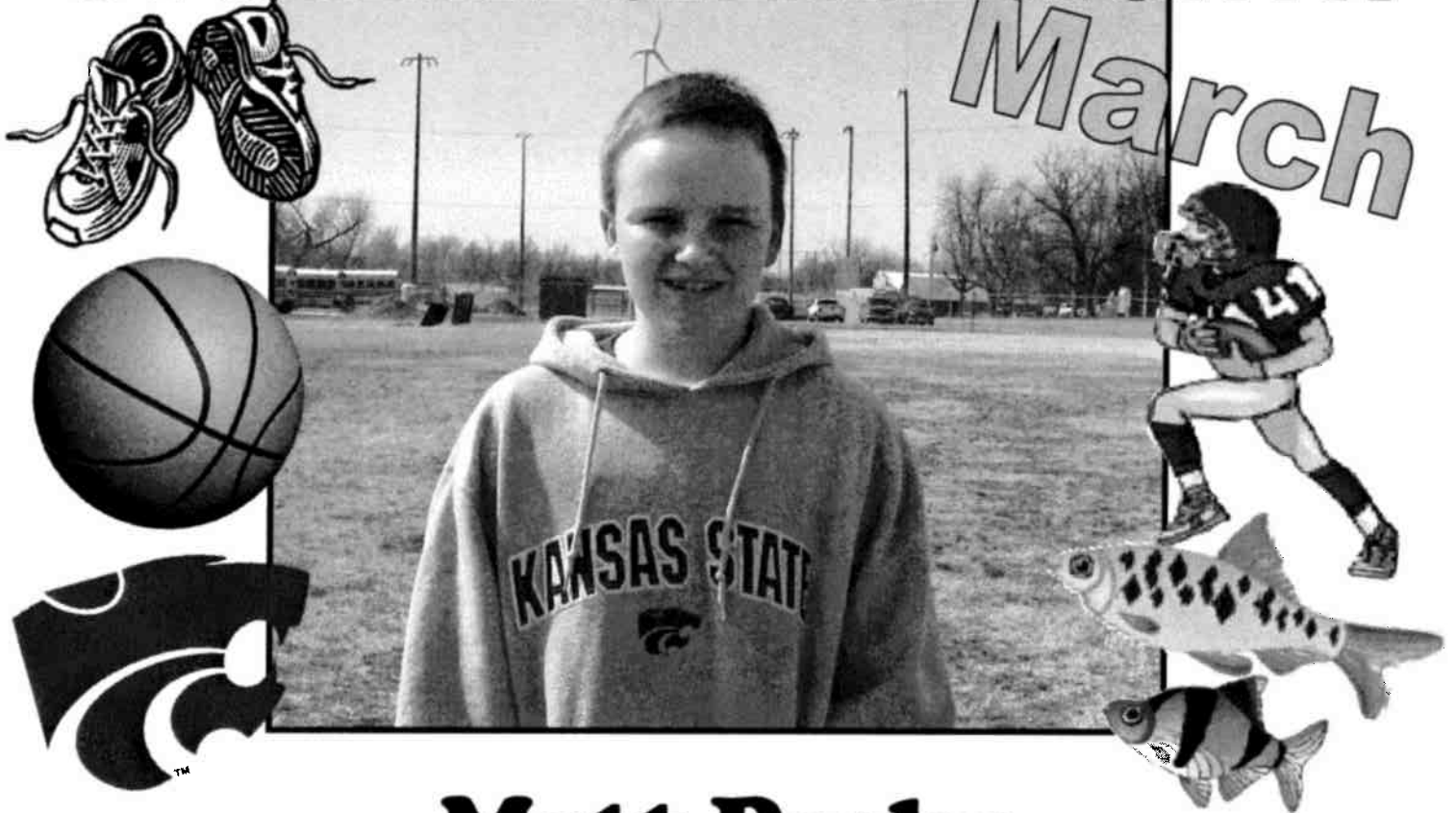


Lorene Scuitte

Lorene Scuitte is the staff member of the month. She has been a teacher at Ell-Saline for 25 years, teaching communications and English I and II. She has sponsored cheerleading, pep club, drama, forensics, FCA, S.I.T, PALS, FOR, and H.S. Scholar's Bowl. Outside of school, Lori attends University United Methodist Church where she takes part in the missions team and helps with fellowship and hospitality teams. She is also an active member of the Kansas Equality Coalition, National Campaign for Tolerance, and KNEA. Lori enjoys spending time with her family, dining out with friends, mowing the lawn, and going to antique stores to shop. She is an avid NCAA basketball supporter and enjoys watching football on television as well. Lori hopes to continue teaching at Ell-Saline until she retires, because she loves being close to kids and couldn't imagine herself teaching anywhere else.

STUDENT OF THE MONTH

March



Matt Parks

Matt Parks is the middle school student of the month. Matt is in 7th grade and is the son of Kerry and Kim Parks. He has two brothers, Nate and Luke. Matt participates in track, football, basketball, and Rachel's Challenge. Matt also shovels other people's drives in the winter and enjoys trapping, hunting, and fishing during his free time. Matt's future plans are to go to Kansas State University to become a fish biologist.